


Strategy 2022 - 2026

Together We Can Do So **Much**





A group of people, including Joe Biden, are gathered for the ground-breaking of Mayo Hospice. They are standing in front of a large banner that reads "Mayo Roscommon Hospice". Joe Biden is on the left, wearing a dark suit and a blue tie, smiling. Next to him is a man in a dark suit and a red and blue striped tie, also smiling. To the right of Biden is a woman in a bright blue dress, and next to her is a man in a dark suit and a blue tie, who is holding a small plant in a pot. On the far right is a woman in an orange dress, smiling. The banner in the background has the text "Mayo Roscommon" in a gold font, "Hospice" in a large green font, and a yellow sunflower logo. The scene is outdoors, and the ground is covered with grass.

*'Hospice care is about dignity, support and respect. Because of your empathy and care, I know the people of Mayo and Roscommon you help will be treated with the utmost decency and humanity during their time of greatest need. You understand what it means to love and care for your neighbour as yourself. I knew this was true when I turned the sod in 2017 for the ground breaking of Mayo Hospice – created as an act of love by the community, for the community.'*

**JOE BIDEN**

**PRESIDENT OF THE UNITED STATES OF AMERICA AND PATRON**

04	Foreword
05	Who We Are
06	What We Do
08	Our Values
10	Looking Ahead 2022-2026
12	Our Commitment to You
13	How You Can Help
15	Thank You

# Foreword

---

In the last five years we have realised our vision of building and opening dedicated state-of-the-art Hospice facilities in both Mayo and Roscommon – truly landmark achievements for the region.

The Covid-19 pandemic has brought some challenging times for our community. The conviction and dedication of our Palliative Care Teams throughout has been remarkable, ensuring continuity of service for patients and their families in the most difficult circumstances. Our fundraisers, volunteers and supporters have shown great resilience in adapting their fundraising activities to an online platform.

Our theme for the next five years is ***‘Together We Can Do So Much’***. What is important to our patients and their families is important to us. Based on their needs and with input from our Service Providers, Board of Trustees and Supporters we have developed this vision which will guide us in expanding our Palliative Care Services and in fulfilling our primary focus of continuing to fund these much needed services in Mayo and Roscommon.

We recognise that you, our community, continue to play an important role in supporting us as we deliver high quality End-of-Life care for the people of Mayo and Roscommon with love, generosity and empathy. Your help is vital as we look ahead to the future. We are forever grateful to you for your continued support.



*Mike Smith*

Mike Smith

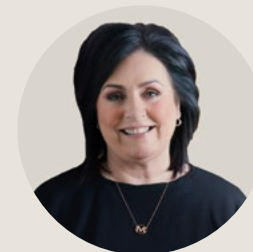
Chair of the Board



*Joanne Grehan*

Joanne Grehan

Chair of the Strategy Committee



*Martina Jennings*

Martina Jennings

Chief Executive Officer



# Who We Are

Born out of an identified need for Palliative Care Services in Mayo and Roscommon in 1993, Mayo Roscommon Hospice Foundation has grown from a small organisation of one doctor and one nurse to a team of over thirty professionals and the first in the country to provide a seven-day Palliative Care Service, looking after over 18,000 patients in that time.

We fund, provide, develop, and support Palliative Care Services in partnership with the Health Service Executive (HSE) for people living with life limiting illnesses and their families in County Mayo and County Roscommon.

Our vision is that everyone who is in need of Palliative Care Services can access them for themselves and their loved ones, when they need it and where they want it.

*'You matter because you are you, and you matter to the last moment of your life.'*

*'We do all we do, not only to help you die peacefully, but also to help you live until you die.'*

**DAME CICELY SAUNDERS  
FOUNDER OF THE HOSPICE MOVEMENT**

*'They help me with pain management and help give me a better quality of life. But it is more than just pain relief, they help me with things right across my life.'*

**PATIENT**

# What We Do

---

Palliative Care improves the quality of life of, and offers support to, those living with life limiting illnesses. These include Cancer, Heart Failure, Lung Disease and neurological conditions such as Parkinson's, Motor Neurone Disease and Multiple Sclerosis.

Although life limiting illnesses are incurable, many people can continue to live active lives for many years. Our services make challenging times easier for patients and their families, meaning patients can live out their lives in comfort and dignity.

Mayo Roscommon Hospice Foundation funds, provides, develops, and supports Palliative Care Services in our Hospices and in our Community. Our services are free and are available to everyone in Mayo and Roscommon.

Thanks to your fundraising efforts, Mayo Roscommon Hospice Foundation provides:

- In-Hospice Palliative Care Services in Mayo and in Roscommon<sup>1</sup> including Day Care Services
- Seven-day Palliative Care Services throughout the communities of Mayo and Roscommon, including the provision of agency nurse cover to support Department of Health and HSE Palliative Care Teams
- Additional Night Nursing services in association with Irish Cancer Society and Irish Hospice Foundation
- Family Therapist, Bereavement Services and Family Support Services

Mayo Roscommon Hospice Foundation has reached important milestones during the term of its 2015-2020 strategy. The main aim was to build the Mayo Hospice and begin work on the Roscommon Hospice, as well as continuing to fund Palliative Care Services in both counties. The Mayo Hospice was completed in 2019, and opened to patients in 2021. The Roscommon Hospice was completed in November 2021, and will open to patients in 2022.

Palliative Care Services have been continuously funded throughout this period by Mayo Roscommon Hospice Foundation, despite the unprecedented challenges posed by the Covid-19 pandemic.

<sup>1</sup> Roscommon Hospice opening 2022



*'With huge community support for its nourishing culture, the future lies in further developing and embedding Hospice services so that more and more of us can access them. Mayo Roscommon Hospice Foundation trusts its funders and supporters, its staff and volunteers to ensure its services will be exactly where and when they are needed, bringing comfort, hope and friendship wrapped up in the best of trusted professionalism. Five years of hard work ahead ... yes and a growing, sophisticated and extensive network of Palliative Care close to all our doors for the day we need it.'*

**MARY MCALEESE**  
**PATRON**

# Our Values

Our core values give us purpose in our work. They underpin our organisation and support us in realising our vision and ambition.

## Equality

- Everybody is treated with dignity
- We listen to and respect the wishes of every individual in our care
- Our service is inclusive and accessible to all

## Compassion

- Our services are delivered with love and generosity of spirit
- We care about the needs of every person who accesses our services
- Empathy is at the heart of all we do

## Excellence

- We lead by example, strive to be best in class and work collaboratively
- Good governance is central to our operations at every level
- We are responsible in our work and sustainable in our impact







*'I am delighted to see Mayo Roscommon Hospice Foundation launch their new 5 Year Strategic Plan. After the whirlwind of the last 3 years that has seen their two Hospice Units being launched, one in Mayo and one in Roscommon it is wonderful to see the plans to extend the services. It is hard to believe from when the Foundation first was established 29 years ago that there are now two state-of-the-art Hospice Units available to the people of Mayo and Roscommon and I wish the Foundation every success in their many plans to develop and grow what is an invaluable service to so many families in our communities.'*

**CATHAL HUGHES**  
**PATRON**

*Photo: Family Room,  
Roscommon Hospice*

# Looking Ahead 2022-2026

During the term of this strategy, Mayo Roscommon Hospice Foundation has ambitious plans to enhance, expand and embed our services to meet the current and future needs of our clients and their families.

## PALLIATIVE CARE SERVICES

- |                     |   |
|---------------------|---|
| Palliative Care     | <ul style="list-style-type: none"><li>• Continue to support and provide Palliative Care Services in our Hospices and in the Communities of Mayo and Roscommon</li><li>• Respond to the needs of patients with life limiting illnesses, who are increasingly living with their conditions for longer, by ensuring our Palliative Care Services improve their quality of life</li></ul> |
| Capital Development | <ul style="list-style-type: none"><li>• Make provision for future Capital Development and expansion of current services</li></ul>   |

## FURTHER DEVELOPMENT AND DELIVERY OF PALLIATIVE CARE SERVICES IN OUR COMMUNITY

- |                            |  |
|----------------------------|--|
| Paediatric Palliative Care | <ul style="list-style-type: none"><li>• Collaborate with the HSE and explore further partnership opportunities to develop and deliver Paediatric Palliative Care and Support Services in the Community</li></ul>                 |
| Out-of-Hours               | <ul style="list-style-type: none"><li>• Broaden and extend the current Night Nursing offering</li><li>• Work in partnership with the HSE to meet the additional requirements for Out-Of-Hours Palliative Care Services</li></ul> |

## DAY CARE SERVICES

- |                    |  |
|--------------------|--|
| Community Day Care | <ul style="list-style-type: none"><li>• Ensure that appropriate Day Care Services are developed and provided throughout our region</li></ul> |
|--------------------|--|

## FAMILY THERAPIST, BEREAVEMENT SERVICES AND FAMILY SUPPORT SERVICES

- |                   |  |
|-------------------|--|
| Group Counselling | <ul style="list-style-type: none"><li>• Further develop Group Counselling and Bereavement Counselling Services in Roscommon and Mayo</li></ul>   |
| Respite Services  | <ul style="list-style-type: none"><li>• Provide Respite Services in Mayo and Roscommon Hospices</li><li>• Review the current offering and scope out the requirement for additional respite provision elsewhere in the region</li></ul> |

## COMMUNITY ENGAGEMENT

- |                     |  |
|---------------------|--|
| Building Advocates  | <ul style="list-style-type: none"><li>• Connect with the community to create sustainable models of support. We will do this by building awareness of the Hospice movement, its purpose and values, through partnerships with schools in the region, and other community groups</li></ul> |
| Promote Empowerment | <ul style="list-style-type: none"><li>• Provide support in our region to increase engagement with Mayo Roscommon Hospice Foundation and its charity shops through fundraising and volunteering activities</li></ul>  |

# Looking Ahead 2022-2026

## ADVOCACY

**Be the voice of patients and their families in difficult times. We will do this by:**

- Continuing to listen to our clients, their families and carers and those that support them, and build on all the feedback we receive
- Being the link between the patient and/or their family and Service Providers as required

**Nationally, with our network of fellow Hospices, we will:**

- Represent the voice of patients and their families by engaging in national policy formation
- Connect with Service Providers and our Partners to embed Palliative Care across our health system and be certain our services are best placed to meet the needs of our patients

**We will work closely with our Partners and Stakeholders to improve the patient and visitor experience across our region, enhancing patient-centred care by:**

- Underpinning our work with research into patient and caregiver experience data and narratives, best practice and future focused needs analysis
- Supporting research and innovation that ensures we can lead the way in delivering world class Palliative and End-Of-Life care and treatment

## SUSTAINABILITY

- Responsibility, sustainability and environmental awareness are central to Mayo Roscommon Hospice Foundation. We recognise our responsibilities towards protecting our climate in the world we live in, and will continue to take real action towards sustainability
- Our shops are a valuable part of Mayo and Roscommon's circular economy. Our customers are also on this journey with us, and have embraced upcycling clothing, furniture and other items that are resold in our shops
- Over the next five years, we will work to reduce our environmental impact, champion sustainability and promote the benefit of donating and purchasing second-hand clothes and household items





# Our Commitment To You

---

Good governance is the foundation stone of our operations. We are fully committed to being transparent and accountable in everything we do. As a charity seeking funds from the public, your trust is key. In this context we will make sure that:

- Our charitable purpose is clear - what we do and how we do it
- Our fundraising practices are transparent so that you will know where all fundraised income has been and will be invested
- We will always deliver on our commitments to the people of Mayo and Roscommon
- We will continue to make connections and grow our partnerships so we can deliver the most inclusive and seamless patient-centred Palliative Care Service for our community
- We are fully compliant with the Charities Regulator Governance Code

In our work, we aim to be recognised as leaders and to meet the highest standards set for the Charity sector.

At all times, we look ahead to explore the potential future needs of the people in our community with life limiting illnesses and their families, and to identify how Mayo Roscommon Hospice Foundation can support them.

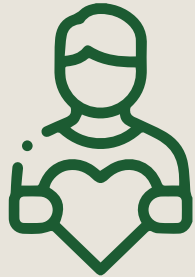
# How You Can Help

---



## Giving

- Membership Draw
- Donate Online
- Fundraising Event
- Host a Coffee Morning
- Donate to our Charity Shops



## Volunteer

- Charity Shops
- Sunflower Days
- Ongoing and Seasonal Campaigns

*'It wasn't just the care you gave her, it was the friendship and advice you gave us her family, making a very difficult time so much easier.'*

**FAMILY MEMBER**

**P:** +353 (0) 94 9388666 | **E:** [info@hospice.ie](mailto:info@hospice.ie) | **W:** [www.hospice.ie](http://www.hospice.ie)



*'I am so proud to be associated with Mayo Roscommon Hospice Foundation especially when a neighbour told me of the wonderful and dignified care that was afforded to his relative in their final days. That is why the Hospice was so badly needed for our region.'*

**BILL DURKAN, PROUD SUPPORTER**

*Photo: Main Corridor,  
Roscommon Hospice*



# Thank You

Every contribution to Mayo Roscommon Hospice Foundation is important, helping us to continue providing compassionate care and support to those with life limiting illnesses and their loved ones.

No matter how large or small, your donation means so much to families who need our services. As a result of your generosity, we now have a Hospice in each county that has been built by the people, for the people.

As we look ahead to the next five years, your ongoing engagement and commitment is essential as we continue to fund, provide, develop, and support Palliative Care Services in Mayo and Roscommon.

We thank you for placing your faith and trust in us.



*Mayo Roscommon*  
**Hospice**  
*Foundation*

**Mayo Roscommon Hospice Foundation**

Main Street, Knock, County Mayo, Ireland, F12 FX66

Charitable Status No: 10980 CRA: 20029098

[www.hospice.ie](http://www.hospice.ie)



*PHOTOS:*

*Front cover: Mayo Hospice*

*Back cover: Roscommon Hospice*

*Maurice Haran sculptures at both our  
Hospices reflect our theme*

***'TOGETHER WE CAN DO SO MUCH.'***

**Together We Can Do So Much**